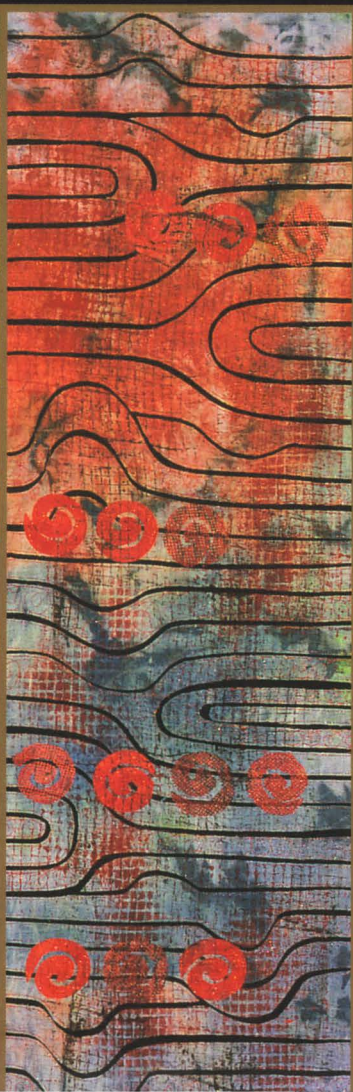
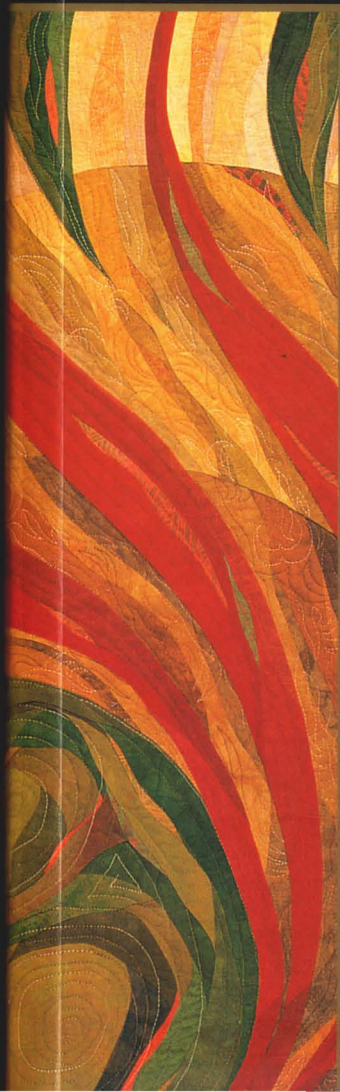


MASTERS

ART QUILTS

MAJOR WORKS BY LEADING ARTISTS

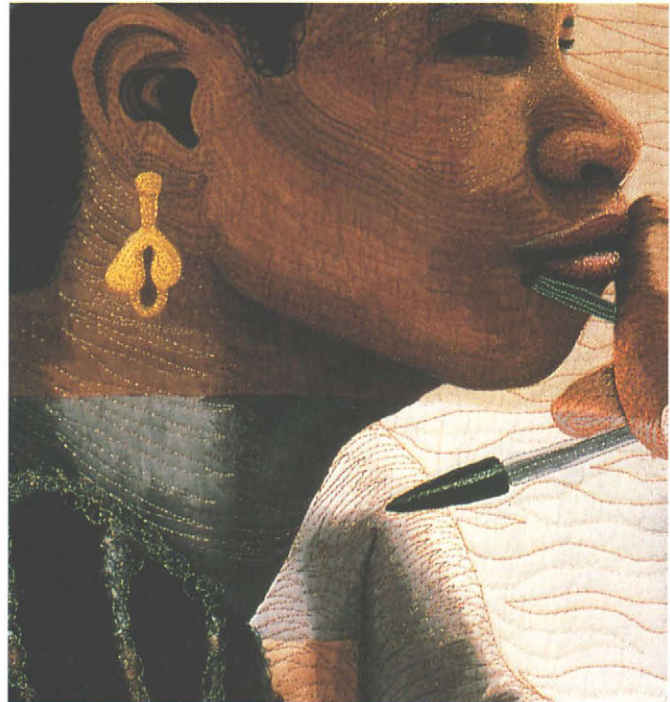




CHATTELAIN

Hollis Chatelain

WHAT SHINES THROUGH IN HOLLIS CHATELAIN'S WORK is her love for the people she paints. Based on her own photographs, Chatelain's fiber-reactive dye paintings of her friends from many countries are heavily machine quilted to add shading, depth, and details to the images. Her work in this style began in 1996 and developed out of a deep feeling of homesickness for the people of West Africa, where she lived for 12 years after college. Her yearning for Africa moved her to paint its people, as a way of connecting with them and of sharing her experiences of the joy in their lives. More recent work depicts people from other countries the American artist has visited and has a more direct social agenda, promoting an awareness of the importance of basic human rights: peace, clean drinking water, education, and protection from economic exploitation.

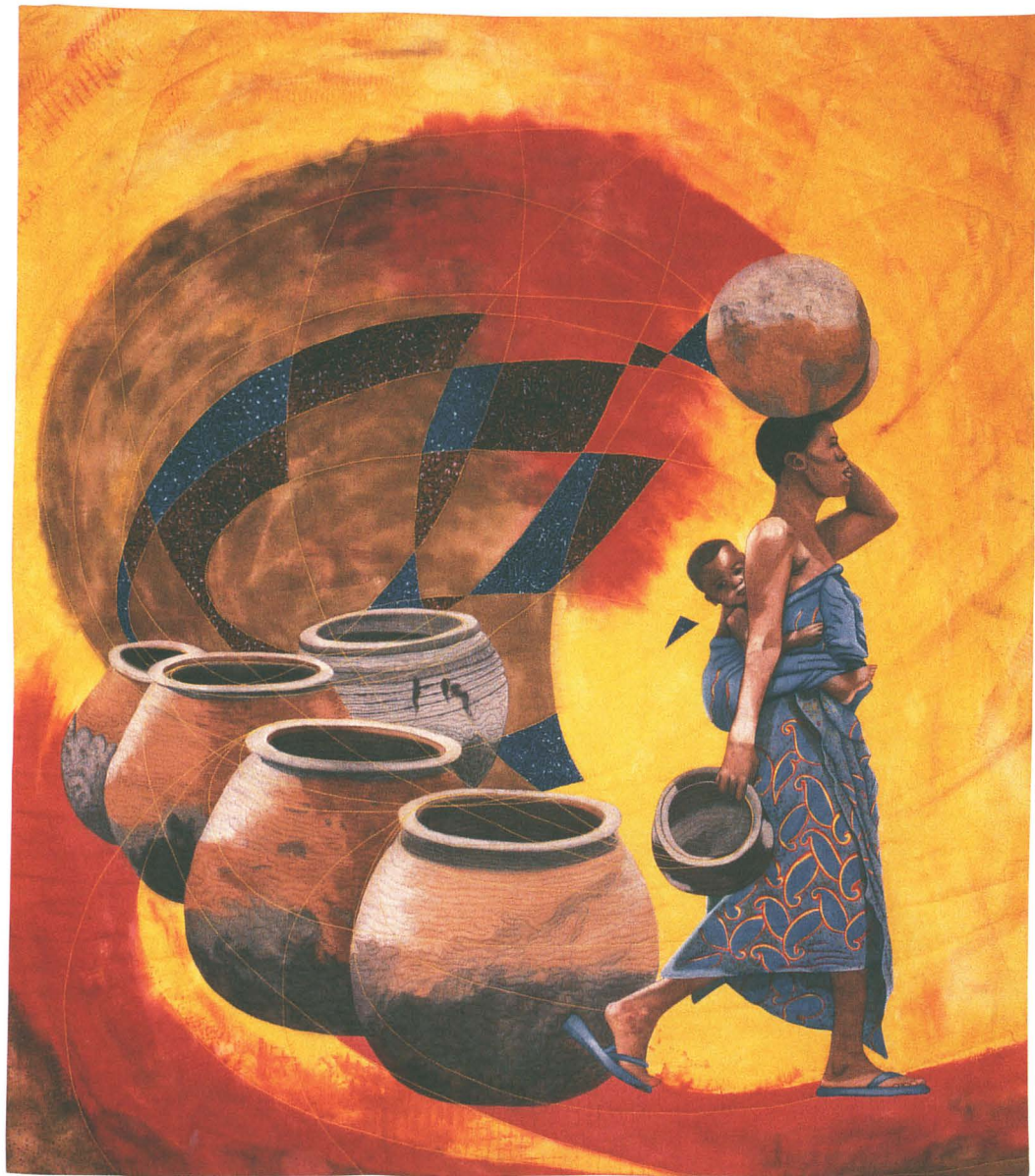




◀ **School: It's Never Too Late
to Learn** | 2000

63 x 46 inches (1.6 x 1.2 m)
Cotton fabrics, wool batting,
fiber-reactive dyes; hand dye-
painted, machine quilted

Photos by Lynn Ruck

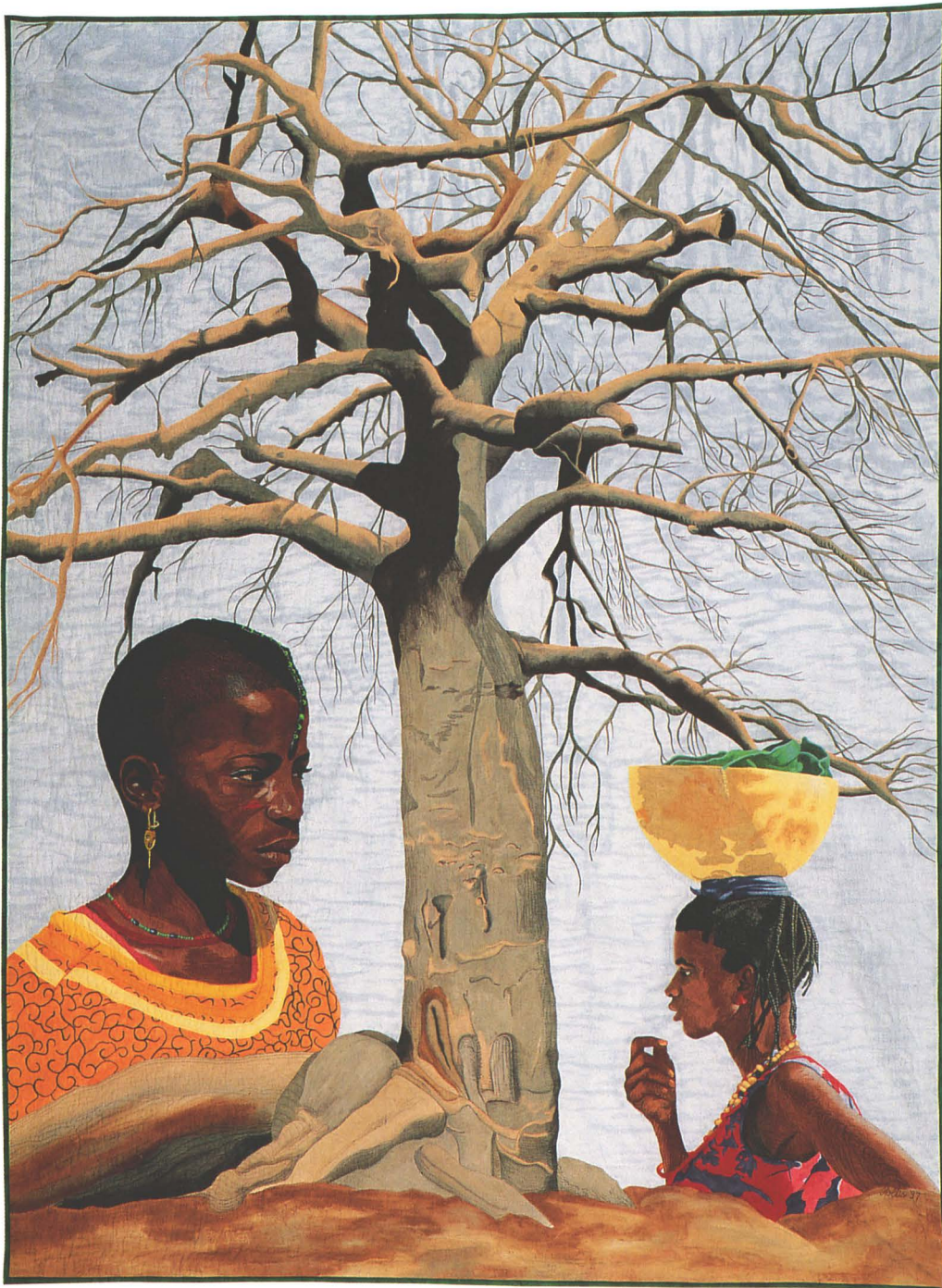


▲ A New Day | 1998

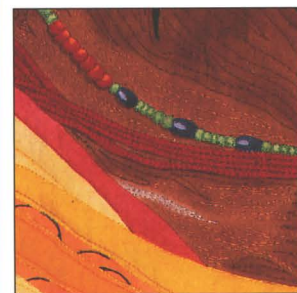
48 x 45 inches (1.2 x 1.1 m)

African fabrics, cotton batting, cotton, fiber-reactive dyes; appliquéd, hand dye-painted, machine quilted

Photos by Lynn Ruck



“ The 12 years I lived in Africa deeply influenced me. I feel Americans should know more about the joy, harmony, and pride of the African people. ”



◀ Sahel | 1997

80 x 60 inches (2 x 1.5 m)
Cotton, cotton/polyester
batting; hand dye-painted,
machine quilted

Photos by Lynn Ruck



◀ **The Grandfather** | 2000

44 x 54 inches (1.1 x 1.4 m)

Cotton, wool/polyester batting; hand dye-painted, machine quilted

Photos by Lynn Ruck

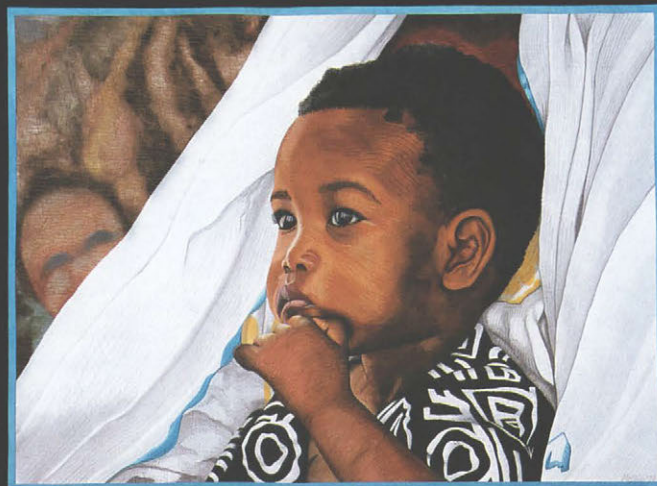


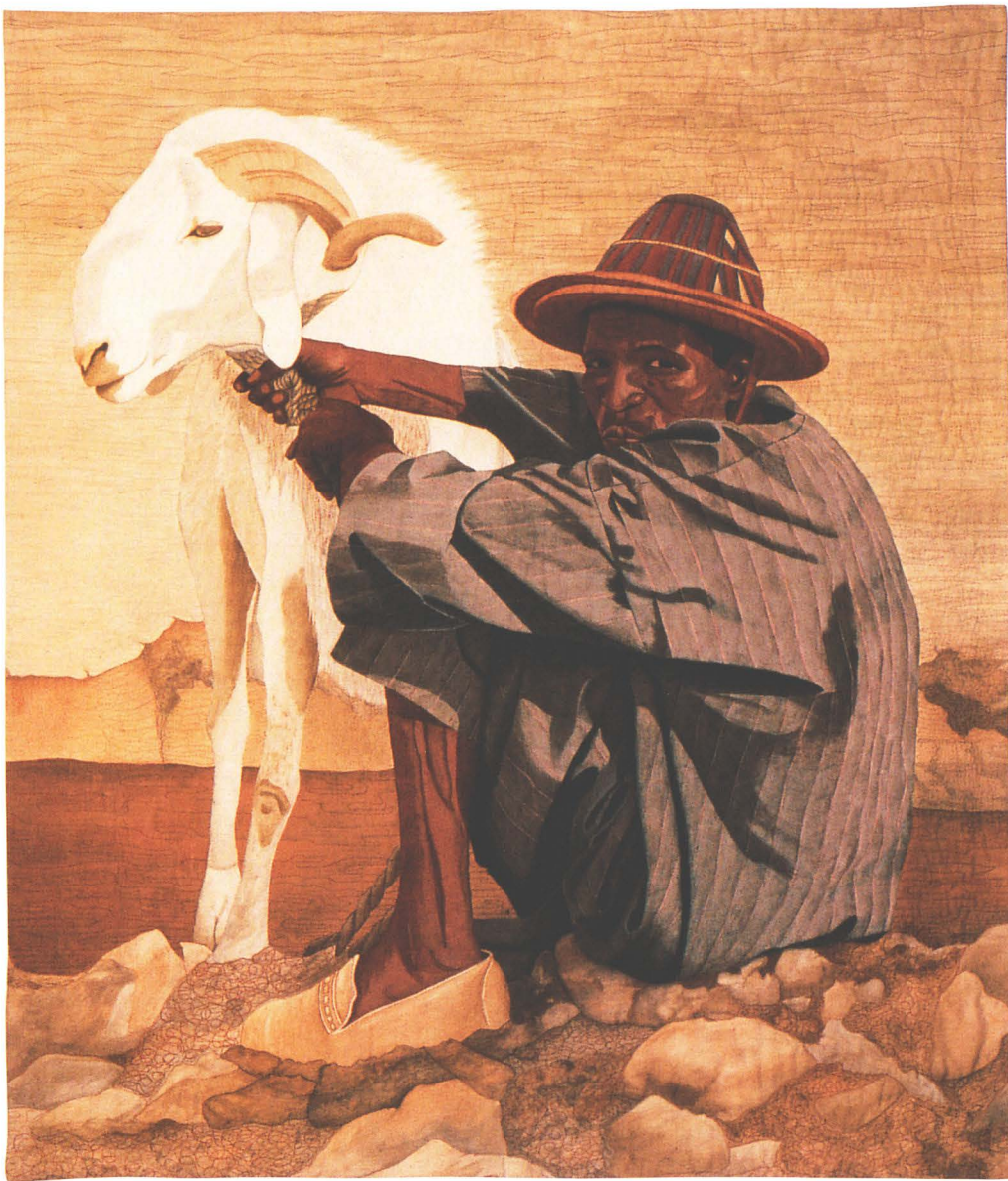
Fatima's Son | 2002 ▶

36 x 46 inches (91.4 x 116.8 cm)

Cotton, wool batting; hand dye-painted, machine quilted

Photos by Lynn Ruck





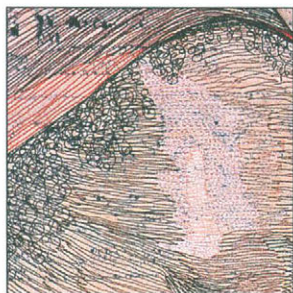
▲ Tabaski Ram | 1997

40 x 34 inches (101.6 x 86.4 cm)

Cotton, cotton classic batting, fiber reactive dyes; hand dye-painted, machine quilted

Photos by Lynn Ruck

“ Much of my work is influenced by personal experiences. I make imagery that evokes an emotional response and creates a mood or atmosphere. My dreams also provide me with an infinite supply of inspiration and reinforce my views and feelings. ”



Burkinabe Mother | 2003 ▶

42 x 30 inches (106.7 x 76.2 cm)

Mali cotton fabric, polyester
batting; machine quilted

Photos by Lynn Ruck



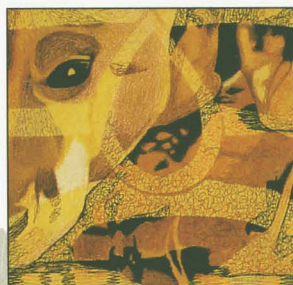


▲ Precious Water | 2004

77 x 85 inches (2 x 2.2 m)

Cotton, polyester batting; hand
dye-painted, machine quilted

Photos by Forrest L. Doud





▲ The Gift | 2006

48 x 53 inches (1.2 x 1.4 m)

Cotton, wool/polyester batting; hand
dye-painted, machine quilted

Photo by Lynn Ruck



▲ Blue Men | 2001

60 x 78 inches (1.5 x 2 m)
Cotton, wool batting; hand
dye-painted, machine quilted

Photo by Lynn Ruck

“ Since 2000, much of my work has reflected my feelings about worldwide issues. Whether these concerns are social or environmental, they have overwhelmed my dreams and manifested themselves in my art. I would like viewers to see my African imagery as a tribute to a continent whose people I truly admire and respect. ”